



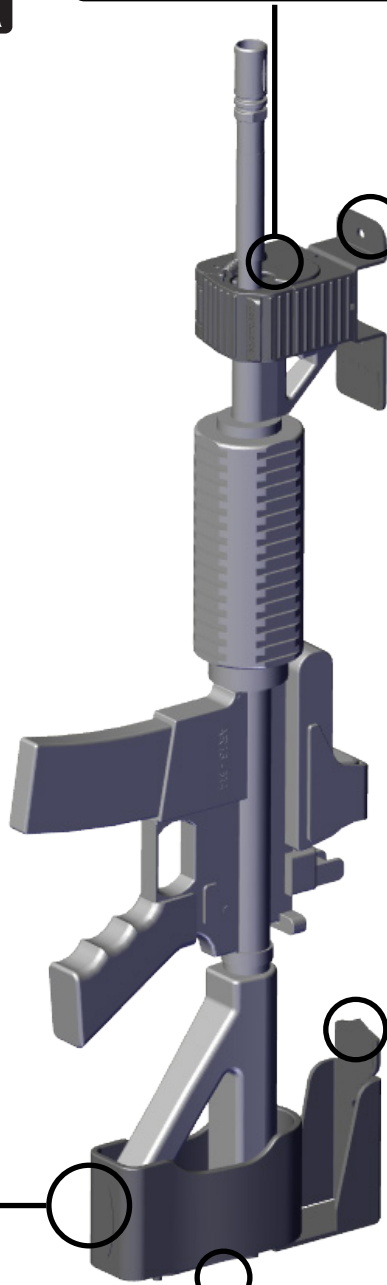
SILICONE BARREL LOCK INSERT
Remove for Shotgun

STEEL LOCK HEAD
Mounting Plate

BUTT PLATE
Mounting Plate

POLY BUTT PLATE

BUTT PLATE SWIVEL BRACKET



Jotto Gear Wall Hanger
User's Manual



WARNING



FAILURE TO FOLLOW THESE WARNINGS MAY RESULT IN SERIOUS INJURY OR DEATH TO YOU OR OTHERS

WARNING: READ USERS MANUAL BEFORE USING.

WARNING: This Storage device is not a substitute for a gun safe. Given sufficient time any firearm storage device may be compromised.

WARNING: Neither the Wall Hanger by Jotto Gear nor any other firearm storage device can take the place of other safety procedures including advising children of the dangers of firearms and keeping firearms away from the untrained.

WARNING: Empty firearms of all ammunition before storing. Do not store with rounds in firearm. Store magazines and ammunition separately.

WARNING: Always keep fingers clear of trigger when removing or replacing firearm.

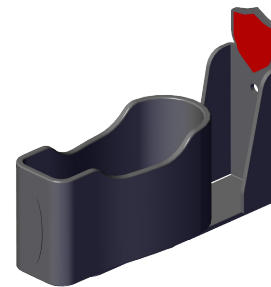
WARNING: Always store firearms in the Wall Hanger with lock in closed and locked position.

WARNING: Always handle firearms as if they are loaded and ready to fire. Always assume a firearm is loaded. **WARNING:** Be familiar with how firearms work. We recommend that you attend hunting and shooting safety classes.

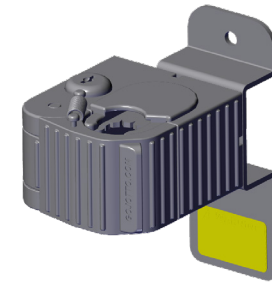
WARNING: Never mix alcohol or drugs with firearms or the Wall Hanger or Home Defense Cabinet.

WARNING: Always follow firearm safety rules set out by the firearm's manufacturer.

LEARN: Before you begin installation, familiarize yourself with what is in the box. Each Wall Hanger by Jotto Gear comes with the following:



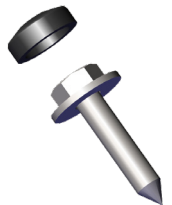
Poly Butt Plate with Mounting Bracket



Lock Head with Mounting Bracket



Security Key



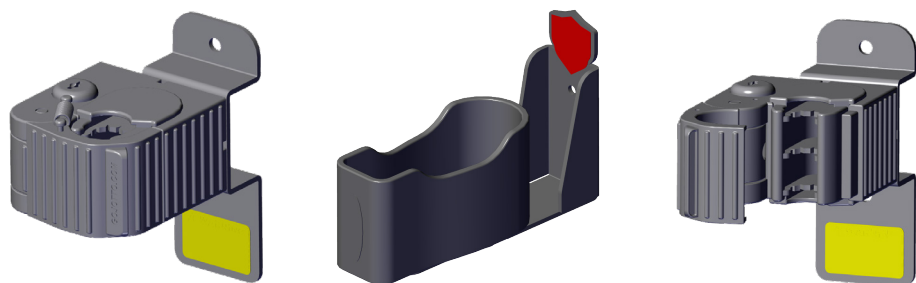
Lag Bolts and Caps



Need Help or Have Questions? 1-800-979-3375

SELECT: Where you want to mount your Wall Hanger by Jotto Gear. Depending upon options available to you, it can be mounted where it works best in your home or at work.

DETERMINE: The Wall Hanger Gun Rack by Jotto Gear is designed to be mounted vertically. Once you have selected the wall that you wish to mount your Wall Hanger Gun Rack, utilize a “stud finder” to locate the 2x4 wall stud. We suggest using a small nail to confirm that it has been located. Once located, position the firearm against the wall to determine the ideal height and mark that spot on the wall. (Pay special attention to the height location of the key tumbler so that accessing the firearm is not too difficult)



Lock Head Setup:

1. The Wall Hanger Gun Rack by Jotto Gear comes with a silicone insert for the lock head to firmly hold the barrel of an AR-15 or rifle. This comes already installed into the lock head. If you are securing a shotgun, then you would simply need to remove the silicone insert and the lock can mount around the barrel or barrel/feeder tube of the shotgun.

Butt Plate Setup:

1. The Wall Hanger Gun Rack by Jotto Gear was designed so that the firearm can be positioned facing away from the wall or facing sideways along the wall (left or right). To accomplish this, simply remove the screws holding the Poly Butt Plate and change the position.



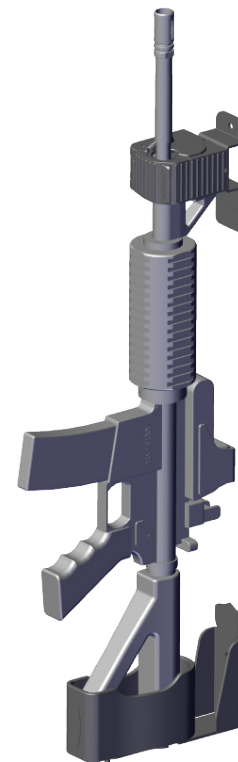
JOTTO GEAR
209 W. Easy St.
Rogers, AR 72756
Customer Service: 800.979.3375
WWW.JOTTOGEAR.COM

⚠ WARNING ⚠

Read and understand these instructions and the labels on the Wall Hanger by Jotto Gear before using. Before you begin installation in a home or office, make sure the location you choose is free of all electrical and mechanical services.

Install Steps:

1. Secure the Butt Plate Mounting bracket to the wall first, using provided lag bolts. This will require the temporary removal of the Black Polycarbonate Butt Plate. Once secured, re-attach the Poly Butt Plate and set the firearm in place in order to position the Lock Head Mounting Bracket. The Wall Hanger includes a Butt Plate Swivel Bracket to allow the weapon to be mounted parallel or perpendicular to the wall.
2. Use the provided key to open the lock and place over the barrel of the firearm. Close the lid and position firearm/lock against the wall and mark your holes for securing the Lock Head Mounting Bracket. Secure the Lock Head mounting bracket using provided lag bolts.
3. *Should you choose to mount the Wall Hanger Gun Rack horizontally, you will need to provide your own 2x4 piece of wood and secure it to your wall studs. Then you can secure the Butt Plate Bracket and Lock Head Mounting Bracket to the 2x4 in a horizontal orientation using the provided lag bolts. Please remember to keep in mind the height level and access to the key tumbler.



⚠ WARNING ⚠

Read and understand these instructions and the labels on the Wall Hanger by Jotto Gear before using. Before you begin installation, make sure to locate the wall stud properly.

