



## Handgun Holster

User's Manual



# WARNING



**FAILURE TO FOLLOW THESE WARNINGS MAY RESULT IN SERIOUS INJURY OR DEATH TO YOU OR OTHERS**

**WARNING:** READ USERS MANUAL BEFORE USING.

**WARNING:** This Storage device is not a substitute for a gun safe. Given sufficient time any firearm storage device may be compromised.

**WARNING:** Neither the Handgun Holster by Jotto Gear nor any other firearm storage device can take the place of other safety procedures including advising children of the dangers of firearms and keeping firearms away from the untrained.

**WARNING:** Empty firearms of all ammunition before storing. Do not store with rounds in firearm. Store magazines and ammunition separately.

**WARNING:** Always keep fingers clear of trigger when removing or replacing firearm.

**WARNING:** Keep Thumb on back of hammer or slide when inserting pistol in holster to insure pistol is not cocked during insertion.

**WARNING:** Always store firearms in the Handgun Holster with lock in closed and locked position.

**WARNING:** Use only with firearms listed in user's manual. Do not use with firearms not listed.

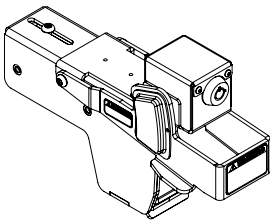
**WARNING:** Always handle firearms as if they are loaded and ready to fire. Always assume a firearm is loaded.

**WARNING:** Be familiar with how firearms work. We recommend that you attend hunting and shooting safety classes.

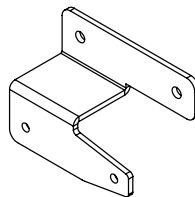
**WARNING:** Never mix alcohol or drugs with firearms or the Handgun Holster or Home Defense Cabinet.

**WARNING:** Always follow firearm safety rules set out by the firearm's manufacturer.

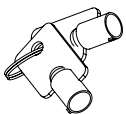
**LEARN:** Before you begin installation, familiarize yourself with what is in the box. Each Handgun Holster by Jotto Gear comes with



(1) Handgun Holster



(1) Universal Left Hand/  
Right Hand Bracket



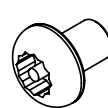
(2) Barrel  
Security Key



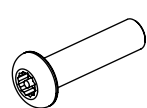
(2) 1/4" -20 AVK  
Fasteners



(1) T25 Torx  
Drive Bit



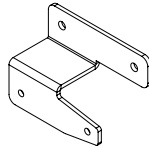
(2) #6-32 Torx  
Drive Tamper  
Screw



(2) 1/4" -20 x 1.25"  
Torx Button Head  
Cap Screw

# Need Help or Have Questions? 1-800-979-3375

**SELECT:** Determine where you want to mount your Handgun Holster by Jotto Gear. Each handgun holster comes with two different mounting brackets. Depending upon options available to you, it can be mounted where it works best in your vehicle, home or at work.



(1) Universal Left Hand/  
Right Hand Bracket

## Holster Set Up:

Before you attach the holster body to the mounting bracket, you will need to set up the holster to receive your handgun. Each Handgun Holster by Jotto Gear comes with the “Barrel Stop” and the “Trigger Guard Shim” pre-installed as an example of how yours could look. The padded barrel stop protects the end of the barrel and is adjusted like you see with the white sample gun shipped in the box. There is a plastic shim that rests beneath the trigger guard. This trigger guard shim must be used on some models to take up slack between the bottom of the trigger guard and the inside bottom of the handgun holster to provide for proper locking.

1. Use the supplied T25 Torx bit and loosen the tamper proof torx screw on the top/front portion of the holster. It should be loose enough to slide it back and forth.
2. With the barrel stop out of the way, if your handgun trigger guard hits the front edge of the trigger guard shim then use a #1 Phillips head screw driver and remove the two screws and the shim.
3. Place your handgun into the holster sliding the barrel stop so you can close the bail down over the back of the handgun slide.
4. Snug the barrel stop up against the handgun barrel and with the bail just touching the back sides of the handgun slide tighten the tamper proof torx screw.

**JOTTO GEAR**  
209 W. Easy St.  
Rogers, AR 72756  
Customer Service: 800.979.3375  
[WWW.JOTTOGEAR.COM](http://WWW.JOTTOGEAR.COM)

## - Home/Office Installation -

### ⚠ WARNING ⚠

Read and understand these instructions and the labels on the Handgun Holster by Jotto Gear before using.

Before you begin installation in a home or office, make sure the location you choose is free of all electrical and mechanical services.

1. Secure chosen mounting bracket to location you've selected using the hardware you've supplied.
2. Proceed to Mount the Holster section.

## - Automobile Installation -

### ⚠ WARNING ⚠

Read and understand these instructions and the labels on the Handgun Holster by Jotto Gear before using.

Before you begin installation in a vehicle, make sure the location you choose is free of all gas tank, gas lines, brake lines, electrical and mechanical services.

**AVK Installation Procedure** - When selecting the exact location in your vehicle, you must check to make sure the location you choose is free of all gas, electrical and mechanical services. Use this web address to view sample AVK fastener installation <http://jottogear.gojotto.com/avk-fastener-installation-video>

1. The AVK fastener is designed to mount to metal surfaces only. Prepare mounting area by pulling back carpet, padding or other materials and marking where you will drill using the chosen mounting bracket.
2. Predrill pilot holes where you marked with 1/4" drill bit. Using a 25/64" drill bit, enlarge pilot holes.
3. Place 1/4"-20 x 1" long bolt through the 5/16" flange nut and hand thread bolt into the AVK fastener.
4. Place into 25/64" drilled hole and use 1/2" box end wrench to secure the flange nut. Apply downward pressure on the flange nut, pressing AVK fastener into hole. Using socket wrench, tighten the 1/4"-20 x 1" bolt. This will allow the AVK fastener to expand and secure onto the backside of the metal, REMOVE the 1/4"-20 x 1" bolt and discard. Repeat for second hole.
5. Take the two 1/4" -20 x 1" Torx Drive Tamper Screws and attach chosen mounting bracket to AVK fasteners using the T25 torx bit.
6. Proceed to Mount the Holster section.

### Mount the Holster:

1. Depending upon how you are mounting the handgun holster, position the two remaining holes on the mounting bracket with the two holes on either the left or right side of the handgun holster .
2. Take the two #6-32 Torx Drive Tamper Screws and secure handgun holster to the mounting bracket using the T25 Torx bit.





**JOTTO  
GEAR**

### **BARREL LOCK**

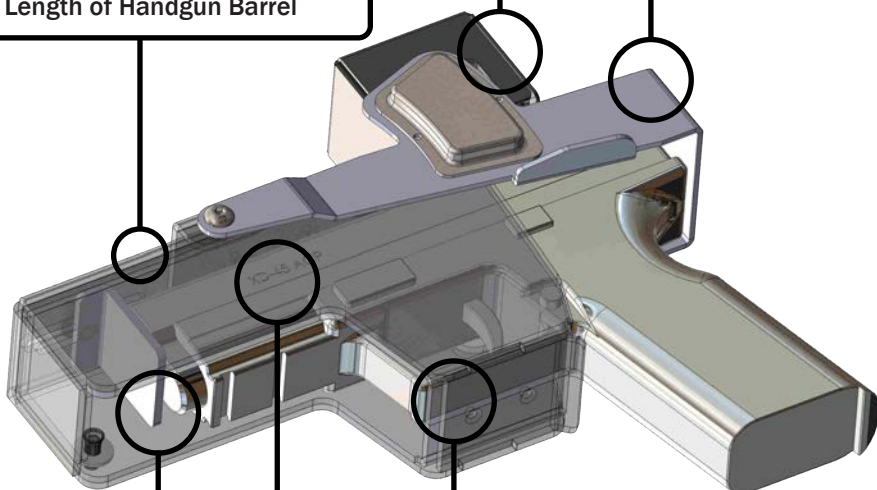
Barrel Key Locks Quick  
Flip Bale Closed

### **QUICK FLIP BALE**

Easy Open Quick Flip Bale  
With Left Or Right Hand

### **TAMPER PROOF TORX SCREW**

Used To Adjust the Barrel Stop to  
Length of Handgun Barrel



### **PADDED BARREL STOP**

Protect The Barrel of Your  
Handgun From Damage

### **TRIGGER GUARD TRIM**

When Needed Trim Piece takes Up Leftover  
Distance Between Bottom of Trigger Guard  
and Inside of Holster Frame

### **BLACK LEATHER INSERT**

Protects Handgun From Damage  
When Placing and Removing Handgun

